

Go Further



*Ford* 2017 FOCUS ELECTRIC

SPECIFICATIONS

STANDARD FEATURES		POWERTRAIN/EPA-ESTIMATED RATINGS/DIMENSIONS	
<b>Mechanical</b> Motor – 107-kW electric Transmission – Single-speed automatic Battery system – 33.5-kWh liquid-cooled lithium-ion 120-volt convenience charge cord 6.6-kW onboard charger Brakes – Regenerative Braking System with 4-wheel disc Anti-Lock Brake System (ABS) Combined Charging System (CCS) charge port capable of 120V, 240V and direct current (DC fast charge) Front-wheel drive (FWD) Steering – Electric power-assisted (EPAS)	<b>Exterior</b> 17" 15-spoke Sparkle Silver-painted aluminum wheels with P225/50R17LRR tires Headlamps – High-intensity discharge (HID) with LED signature lighting Mirrors – Body-color, power, heated sideview with integrated blind spot mirrors, turn signal indicators and security approach lamps Rear spoiler – Body-color Rear-window defroster Taillamps – LED Tire inflator and sealant kit	<b>Battery</b> 33.5-kWh liquid-cooled lithium-ion	<b>Interior</b> Front/Rear
		<b>Motor</b> 107-kW electric	Head room 38.3"/38.0"
		Horsepower/torque equivalent: 143 hp/184 lb.-ft. of torque with single-speed transmission	Leg room 43.1" (max.)/33.2"
			Shoulder room 55.6"/52.6"
		<b>EPA-Estimated Fuel Economy Equivalent</b> <sup>3</sup> 118 city/96 hwy/107 combined MPGe	<b>Capacities</b> (cu. ft.)
			Passenger volume 90.0
			Cargo volume behind front seats 33.2
			Cargo volume behind rear seats 14.2

Comparisons based on competitive models (class is Small Electric Cars based on Ford segmentation), publicly available information and Ford certification data at time of release. Vehicles may be shown with optional equipment. Features may be offered only in combination with other options or subject to additional ordering requirements/limitations. Dimensions shown may vary due to optional features and/or production variability. Information is provided on an “as is” basis and could include technical, typographical or other errors. Ford makes no warranties, representations, or guarantees of any kind, express or implied, including but not limited to, accuracy, currency, or completeness, the operation of the information, materials, content, availability, and products. Ford reserves the right to change product specifications, pricing and equipment at any time without incurring obligations. Your Ford Dealer is the best source of the most up-to-date information on Ford vehicles.

<sup>1</sup>Always wear your safety belt and secure children in the rear seat. <sup>2</sup>Ford Licensed Accessory. <sup>3</sup>Actual mileage will vary. MPGe is the EPA equivalent measure of gasoline fuel efficiency for electric mode operation.



EXTERIOR & INTERIOR CHOICES

Exterior	INTERIOR	
White Platinum Metallic Tri-coat <sup>1</sup>	1	2
Oxford White	1	2
Ingot Silver <sup>2</sup>	1	2
White Gold <sup>2</sup>	1	2
Ruby Red Metallic Tinted Clearcoat <sup>1</sup>	1	2
Blue Candy Metallic Tinted Clearcoat <sup>1</sup>	1	2
Kona Blue <sup>2</sup>	1	2
Magnetic <sup>2</sup>	1	2
Shadow Black	1	2



17" 15-Spoke Sparkle Silver-Painted Aluminum



White Platinum Metallic Tri-coat



Oxford White



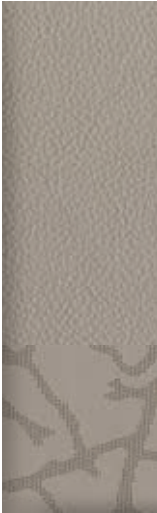
Ingot Silver



White Gold



Ruby Red Metallic Tinted Clearcoat



Light Stone Leather – Available

2



Blue Candy Metallic Tinted Clearcoat



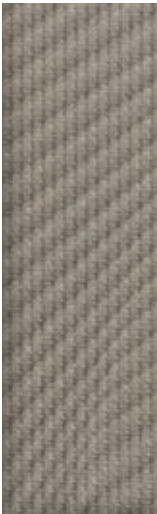
Kona Blue



Magnetic



Shadow Black



Medium Light Stone Cloth – Standard

1



Drive Green For Life.™

A rebate may be in your bright future. Ford customers who own a Focus Electric may be eligible for a \$750 rebate on a SunPower® residential solar system that generates clean, solar energy for the home and electric vehicle charging.<sup>3</sup> The Sierra Club, a Drive Green For Life partner, will receive a \$500 donation for each SunPower rooftop solar system installed through the program. For more information, contact SunPower Corporation at [sunpowercorp.com/drivegreen](http://sunpowercorp.com/drivegreen).

Colors are representative only. See your dealer for actual paint/trim options. <sup>1</sup>Additional charge. <sup>2</sup>Metallic. <sup>3</sup>Talk with your local SunPower dealer to find out if lease programs are available in your state.





## FORD ACCESSORIES

Focus Electric in Ruby Red Metallic Tinted Clearcoat accessorized with side window deflectors by Lund<sup>®1</sup>, lower bodyside graphics, rear spoiler winglets, molded splash guards, and roof-mounted crossbars by THULE<sup>®1</sup>.

### Exterior

- Bodyside graphics<sup>1</sup>
- Full-vehicle cover (A)
- Hood protector<sup>1</sup>
- Racks and carriers<sup>1</sup>
- Rear bumper protector
- Rear spoilers
- Side window deflectors<sup>1</sup>
- Splash guards
- Wheel lock kit

### Interior

- All-weather floor mats (B)
- Ash cup/coin holders
- Carbon-fiber door spears
- Cargo organizer (C)
- Carpeted floor mats
- Charge cord bag<sup>1</sup> (D)
- Door-sill plates
- First aid and roadside assistance kits<sup>1</sup>
- Tablet cradle<sup>1</sup>

### Electronics

- Vehicle Security System

**New Vehicle Limited Warranty.** We want your Ford Focus Electric ownership experience to be the best it can be. Under this warranty, your new vehicle comes with 3-year/36,000-mile bumper-to-bumper coverage, 5-year/60,000-mile Powertrain Warranty coverage, 5-year/60,000-mile safety restraint coverage, and 5-year/unlimited-mile corrosion (perforation) coverage – all with no deductible. Please ask your Ford Dealer for a copy of this limited warranty.

**Electric Component Warranty.** Your vehicle's unique electric components are covered during the Electric Unique Component Coverage, which lasts for 8 years or 100,000 miles, whichever occurs first. Please refer to your Warranty Guide for coverage details.

**Roadside Assistance.** Covers your vehicle for 5 years or 60,000 miles, so you have the security of knowing that help may be only a phone call away should you run out of fuel, lock yourself out of the vehicle or need towing. Your Ford Dealer can provide complete details on all of these advantages.

**Ford Credit.** Get the ride you want. Whether you plan to lease or finance, you'll find the choices that are right for you at Ford Credit. Ask your Ford Dealer for details or check us out at [fordcredit.com](http://fordcredit.com).

**Ford Protect Extended Service Plans.** Whether you purchase or lease your Ford vehicle, insist on genuine Ford Protect extended service plans. Ford Protect has a variety of plans to give you peace-of-mind protection whether you want vehicle component or maintenance coverage. Plus, they are fully backed by Ford and honored at all Ford dealerships in the U.S., Canada and Mexico. When you visit your dealer, insist on genuine Ford Protect extended service plans.

**Insurance Services.** Get Ford Motor Company quality in your auto insurance. Our program offers industry-leading benefits and competitive rates. Call 1-877-367-3847, or visit us at [fordvip.com](http://fordvip.com) for a no-obligation quote. Insurance offered by American Road Services Company (in CA, American Road Insurance Agency), a licensed agency and subsidiary of Ford Motor Company.

**Ford Original Accessories.** They're warranted for whichever provides you the greatest benefit: 24 months/unlimited mileage, or the remainder of your Bumper-to-Bumper 3-year/36,000-mile New Vehicle Limited Warranty. Ford Licensed Accessories (FLA) are warranted by the accessory manufacturer's warranty. FLA are designed and developed by the accessory manufacturer and have not been designed or tested to Ford Motor Company engineering requirements. Contact your Ford Dealer for details and/or a copy of all limited warranties.



<sup>1</sup>Ford Licensed Accessory.